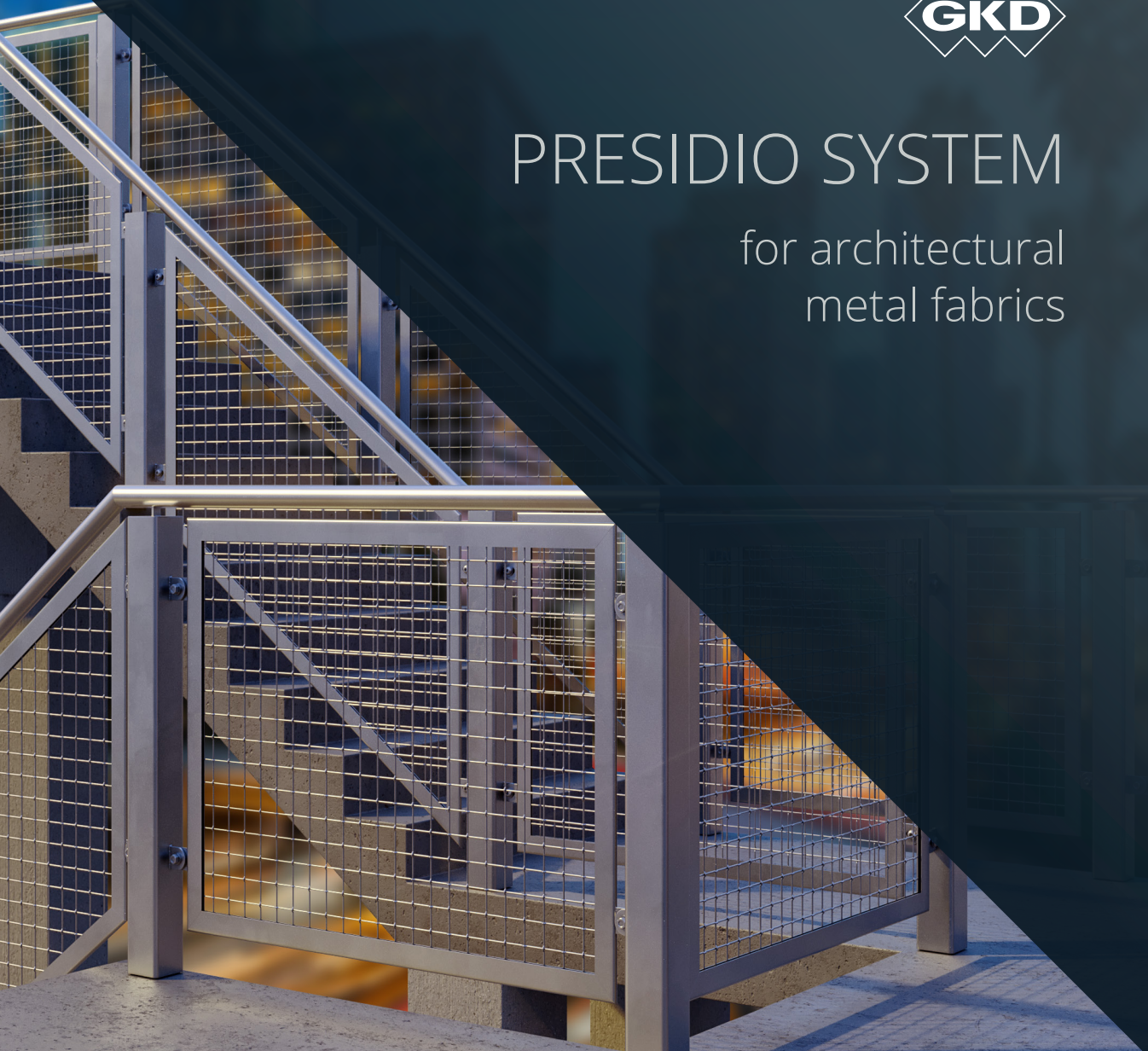
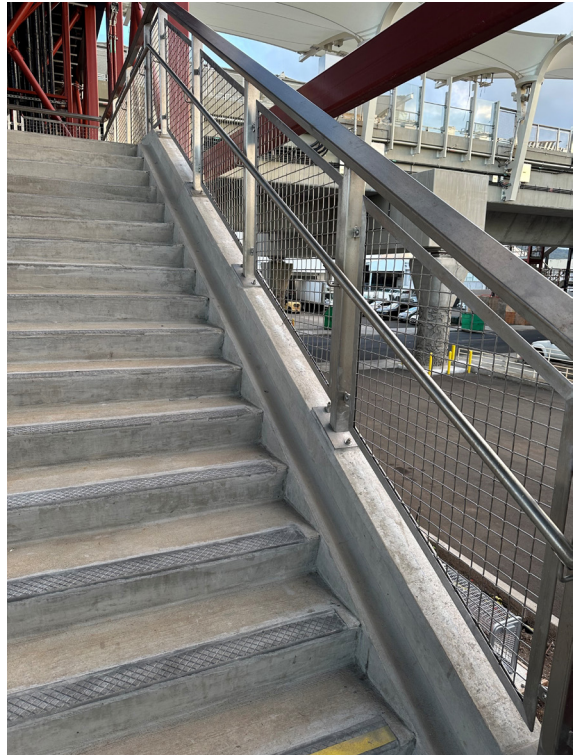




PRESIDIO SYSTEM

for architectural
metal fabrics





SAFETY MEETS DESIGN

GKD's new Presidio standardized infill panels for railing systems feature an eye pleasing, easy-to-install design that doesn't compromise safety as pedestrians traverse stairs, bridges, or pathways.

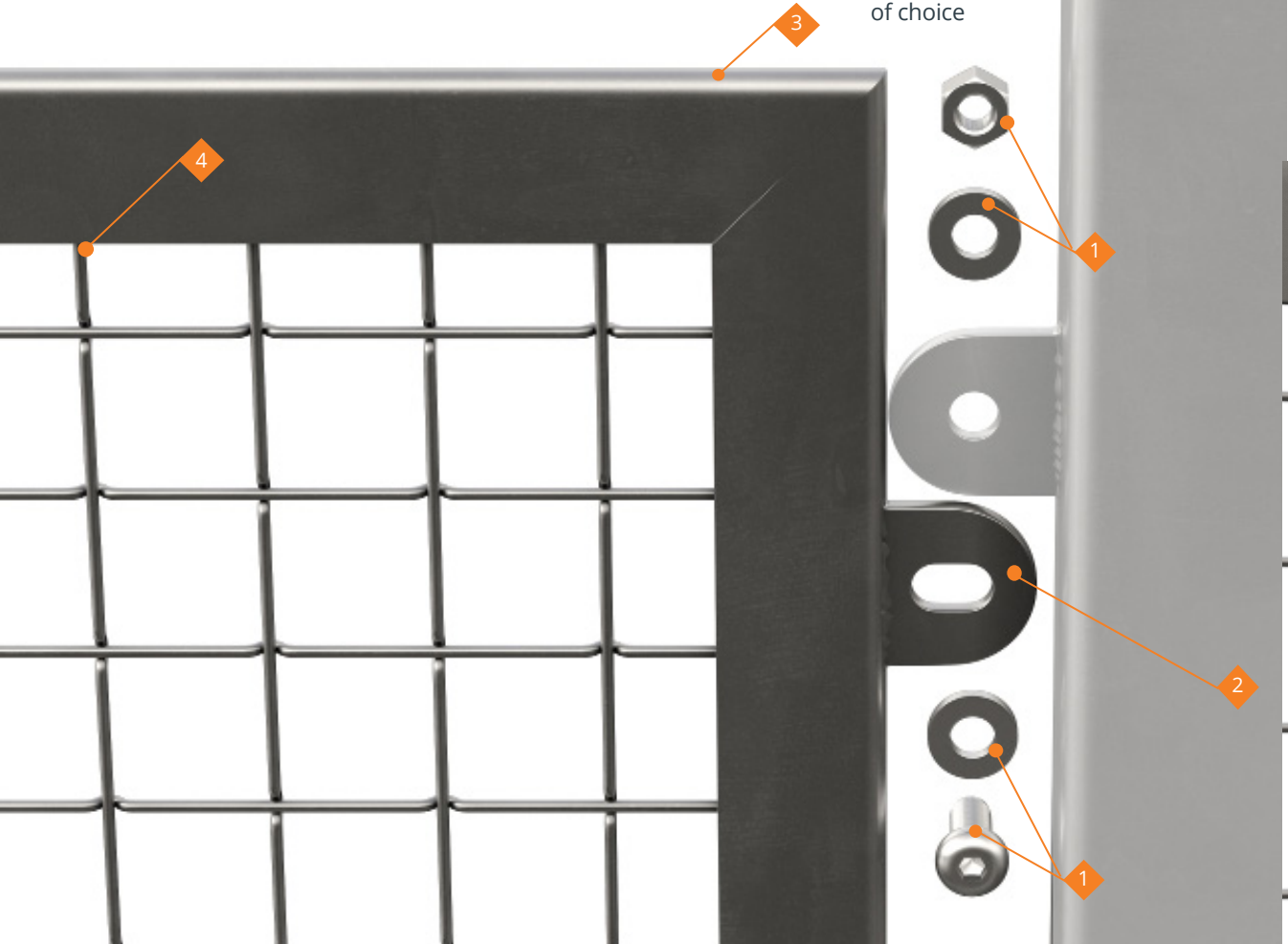
Benefits at a glance

- ◆ Durable and low-maintenance thanks to the exclusive use of stainless steel
- ◆ Variety of metalfabric patterns allows customization of visual weight , texture, and transparency
- ◆ Robust Panels that can withstand a concentrated load of 50lb and up to 30psf ASD wind load
- ◆ Suitable for indoor and outdoor applications
- ◆ Conforms to International Building Code (IBC)
- ◆ Pre-engineered solution significantly reduces overall project lead time

Frame and Components

The standardized railing system and its components are all fabricated from T316L marine-grade stainless steel.

- 1 Fasteners
- 2 Tab attachment
- 3 U-Binding Frame
- 4 Metal Fabric of choice



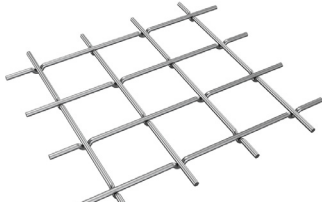
Easy Installation

Components Include:

The standardized railing infill system is comprised of three major components: the metal-fabric panel, the U-binding frame, and the frame to railing connection tabs. The panel can be selected from our pre-selected and pre-engineered offerings, while the U-binding frame accepts the panel and forms the backbone of the system. Stainless steel connection tabs are factory welded to the frame at two points per side and include slots for ½" fasteners..

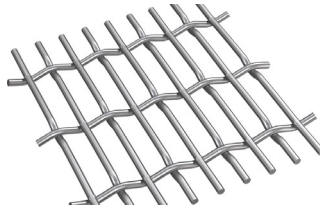


Metal Fabrics Available



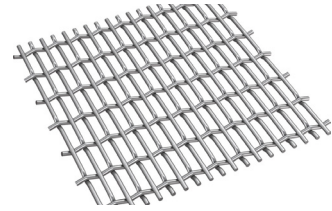
Potomac

Features a pre-crimped rigid mesh with stainless steel rods. It has the largest open space of our rigids with 85%.

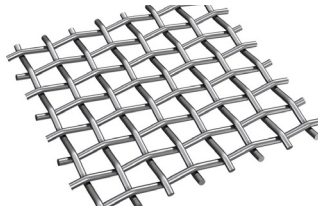


Ellipse 2

The warp wires on this rigid grid mesh are spaced to emphasize a horizontal pattern. The Ellipse series varies by open area.

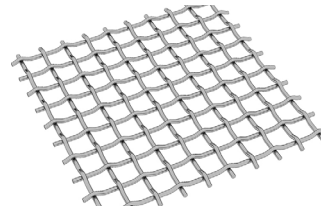


Ellipse 14



Delta 16

Features a traditional grid pattern using a round wire for elegance and a smooth finish. It has a 64% open area.



Tucana

This simple take on a grill pattern features a 70% open area.

Sizes available

Rectangular and parallelogrammatic stair panels can be sized up to 48"x36" for all meshes listed, except Potomac, which can be sized up to 60"x42" for rectangular panels and 54x42 for parallelogrammatic stair panels.

Quality You Can Rely On

Drawing upon 100 years of German Engineering and Craftsmanship, choosing GKD's railing infill system for your next project comes with the confidence that your system has been designed, engineered and fabricated to our industry-leading level of excellence. Visually stunning and equally functional, GKD's stainless steel Railing Infill System is the ideal and sustainable solution for stairs, balconies, bridges, safety walls and critical enclosures for all projects commercial and residential.





GKD-USA, Inc.

Technical Weavers for Industry and Architecture

825 Chesapeake Drive

Cambridge, MD 21613

metalfabrics@gkd-group.com

410-901-8428 or 410-901-8429

www.gkdmetalfabrics.com
