



Case study

GROVE CENTRAL RESIDENCES PARKING GARAGE



PROJECT DETAILS

Owner

Grove Central Residences Parking Garage

Designer

Touzet Studios

Mesh Type

Helix 12



METAL MESH GIVES ICONIC LOOK TO GROVE CENTRAL RESIDENCES' PARKING GARAGE

In the heart of Miami, Florida, Grove Central Residences provides reliable living spaces with in-house luxuries. Alongside studios and apartments with up to five-bedrooms, the complex supplies amenities such as a pool and gym, as well as on-site vehicle charging stations and private parking. In 2017, Grove Central Residences partnered with Touzet Studio to design its parking garage.

Jacqueline Gonzalez Touzet, co-founder of the award-winning architecture and design studio in Coral Gables, Florida, said she chose GKD Helix 12 metal mesh because of its durability and aesthetic.

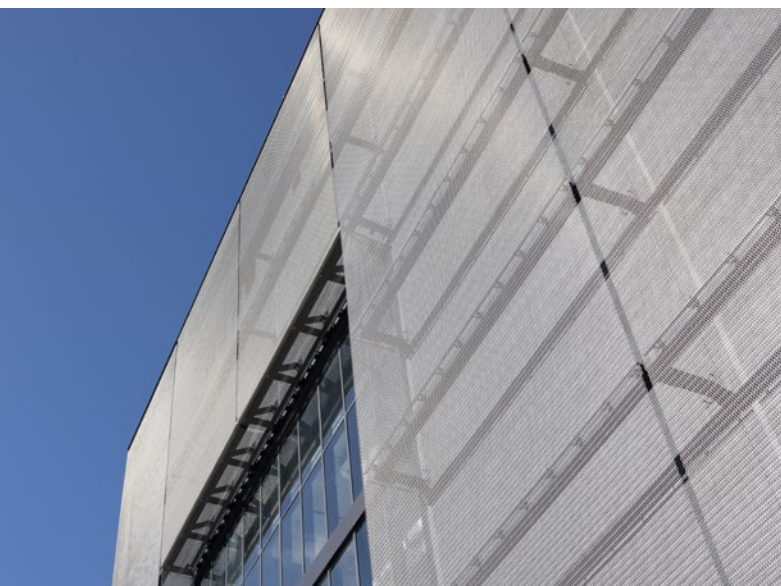
“Our team needed a dramatic material that could create a powerful effect when lit up at night, giving Grove Central a strong visual identity on its most visible corner,” Touzet said. “Helix 12 met those needs perfectly, offering both the dynamic look and the durability needed for South Florida conditions.”

The 13,000+ square feet of flattened round wire presents as 24 panels at around 72 inches tall and 19 inches wide. As the parking garage is along Route 1, one of Miami's most heavily trafficked areas, the metal mesh makes the building unique and memorable.

“The installation of Helix 12 transformed the corner of Grove Central into a standout feature that captures attention, especially at night,” Touzet said.

According to Touzet, Grove Central Residences' parking garage is now a “signature project,” incorporating design with an energy-efficient, adaptable structure.

“The use of materials like Helix 12 adds a distinctive, bold character that makes a statement about the future,” Touzet said. “One that both the client and the public have embraced.”



Contact Information

GKD-USA

T 800 453 8616

metalfabrics@gkd-group.com

gkdmalfabrics.com